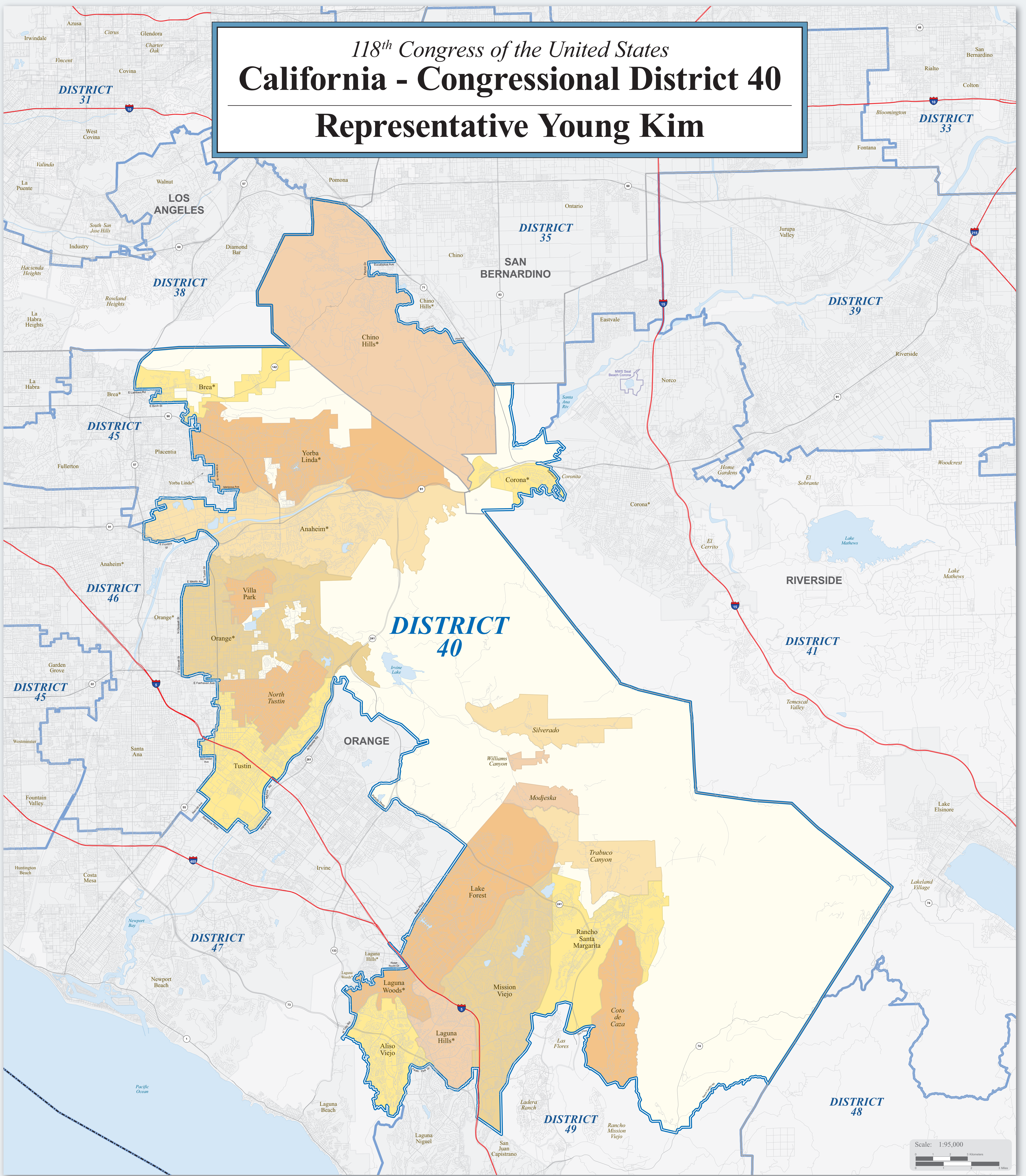


# 118<sup>th</sup> Congress of the United States

## California - Congressional District 40

### Representative Young Kim



Scale: 1:95,000

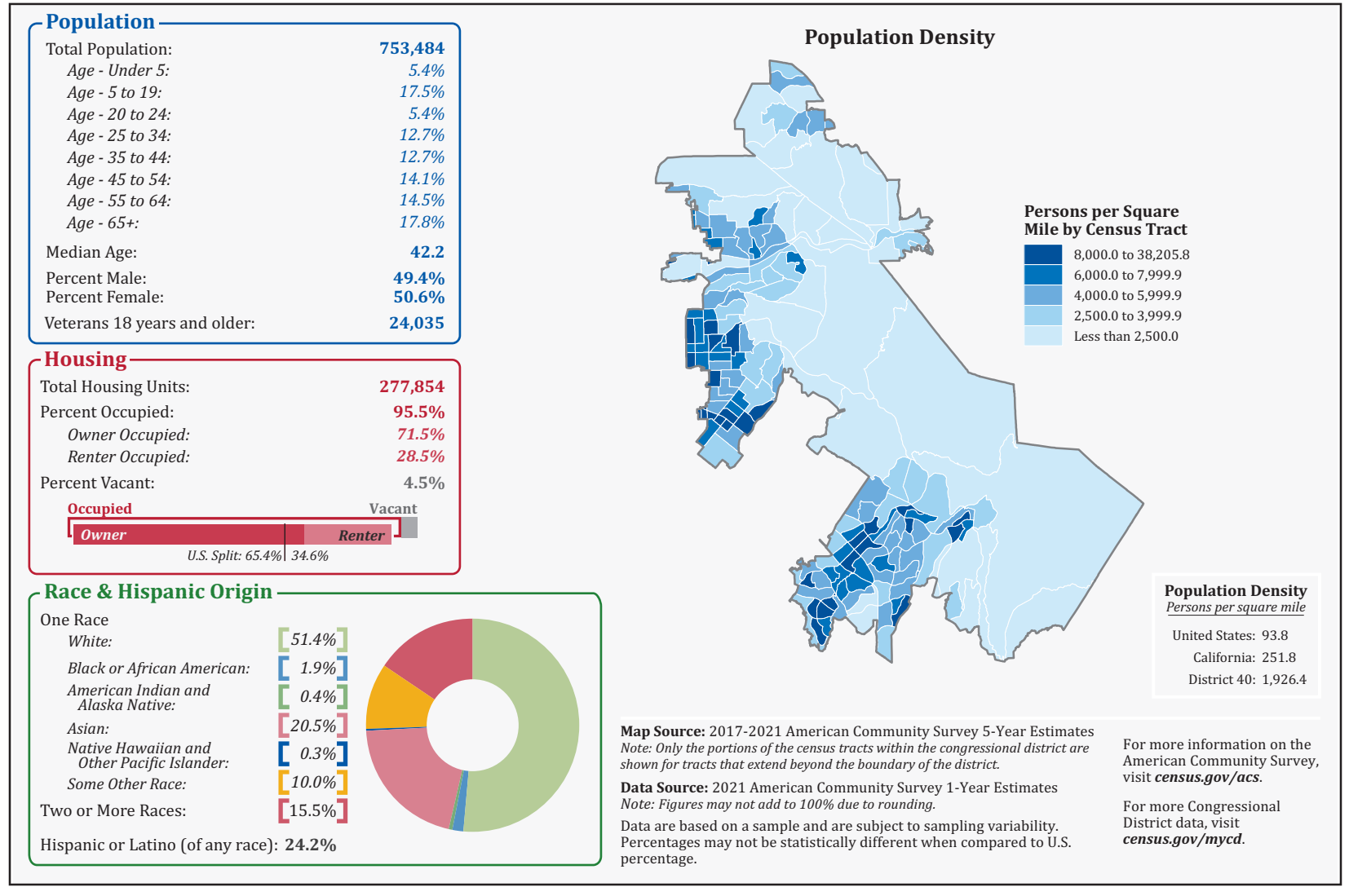
#### Map Legend

- DISTRICT 40** California Congressional District 40
- DISTRICT 2** Other California Congressional District
- Poarch Creek** American Indian Reservation / Off-Reservation Trust Land (Federal)†
- Pamunkey** American Indian Reservation (State)†
- KANSAS OKLAHOMA** State or Statistically Equivalent Entity
- ERIE** County or Statistically Equivalent Entity
- Collinsville** Incorporated Place (Inside of Congressional District 40)†
- Turley** Census Designated Place (CDP) (Inside of Congressional District 40)†
- Chelca** Incorporated Place (Outside of Congressional District 40)†
- Justice** Census Designated Place (Outside of Congressional District 40)†
- Fort Belvoir** Military Installation
- Bristol** Water Body
- I-5** Interstate
- 14** U.S. Highway
- 60** State Highway or State Recognized Road
- State St** Other Road or Ferry

†Labels for entities located both inside and outside of Congressional District 40 include a \*.

Congressional districts are those in effect for the 118th Congress of the United States (January 2023-2025), all other legal boundaries and names are as of January 1, 2020. The boundaries shown on this map are for Census Bureau statistical data collection and tabulation purposes only; their depiction and designation for statistical purposes does not constitute a determination of jurisdictional authority or rights of ownership or entitlement. Source: U.S. Census Bureau's MAF/TIGER database (TAB20) Projection: State-based Albers's Equal Area

#### Congressional District 40 Profile



Map Source: 2017-2021 American Community Survey 5-Year Estimates  
 Data Source: 2021 American Community Survey 1-Year Estimates  
 Note: Figures may not add to 100% due to rounding.  
 For more information on the American Community Survey, visit [www.census.gov/acs](https://www.census.gov/acs).  
 For more Congressional District data, visit [www.census.gov/redistrict](https://www.census.gov/redistrict).



For general information, contact the Congressional Affairs Office at (301) 763-6100. For more information regarding congressional district plans as a result of the 2020 Census, redistricting, and voting rights data, contact the Census Redistricting and Voting Rights Data Office at (301) 763-4039 or [www.census.gov/dro](https://www.census.gov/dro). For information regarding other U.S. Census Bureau products, visit [www.census.gov](https://www.census.gov).

#### Location of California's 40<sup>th</sup> Congressional District - 52 Districts Total

